



WB I-70 Peak Period Shoulder Lane Project

Project Leadership Team #5 / Technical Team Meeting #20

November 15, 2018

CDOT I-70 Mountain Corridor

AGENDA

1. INTRODUCTIONS AND OVERVIEW
2. PROJECT TT CHARTER
3. RESPONSES TO TECHNICAL TEAM ISSUES
4. OUTCOMES FROM ISSUE TASK FORCE MEETINGS
5. OUTREACH SUMMARY
6. FOLLOW UP
 - Report Out
 - Project Overview
7. DISCUSS PROPOSED SOLUTIONS
 - Final Design Details
 - Specifications Sections
 - Transition to Construction
 - Lessons Learned & Best Practices
8. OUTSTANDING ISSUES
9. DEVELOP CRITERIA FOR
10. NEXT STEPS
 - Projects
 - Upcoming Meetings

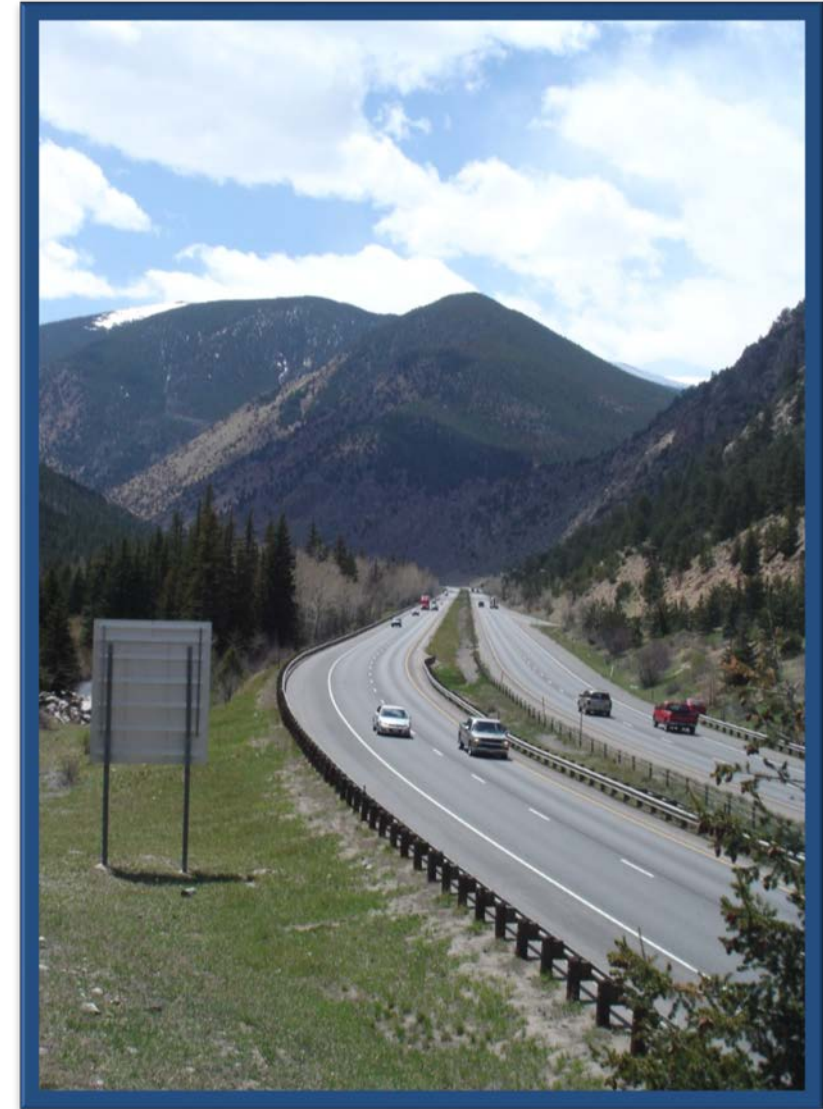




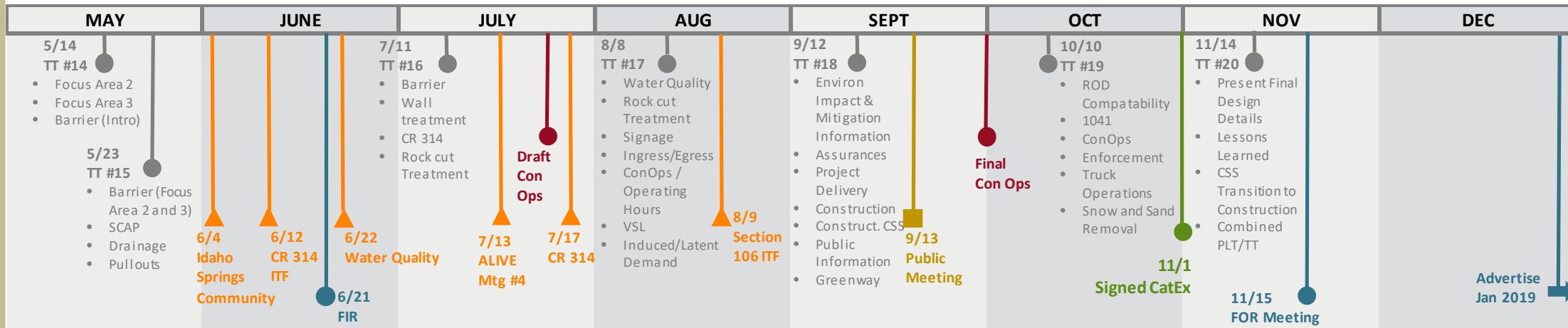
INTRODUCTIONS AND OVERVIEW

PROJECT UPDATES

- Floyd Hill
- Region 3 Vail Pass
- Idaho Springs Transit Center
- Clear Creek Greenway
- CR 314 Phase II
- Fall River Road Bridge
- Smart 70 / RoadX
- Geohazard Mitigation Program
- Variable Speed Limit



SIMPLE SCHEDULE



PROJECT ELEMENTS DISCUSSION

- November TT
 - Final Design Details
 - Lessons Learned
 - Specifications
 - CSS Transition to Construction





FOLLOW UP

REPORT OUT

- Concept of Operations
- MOU
- Documented CatEx
- 1041 Process



PROJECT OVERVIEW

- Proposed Action
 - Addition of a 12-mile tolled Peak Period Shoulder Lane (PPSL) between east Idaho Springs and the U.S. Highway 40 (US 40)/I-70 interchange in the WB direction
 - Addition of 5 WB and 2 EB safety/enforcement pullouts; improvement to 1 EB
 - Rockfall mitigation
 - Improvement to roadway geometry
 - Improvements at Exits 240 and 241
 - Improvements at Dumont Port-of-Entry Interchange
- Schedule – Advertise in early 2019

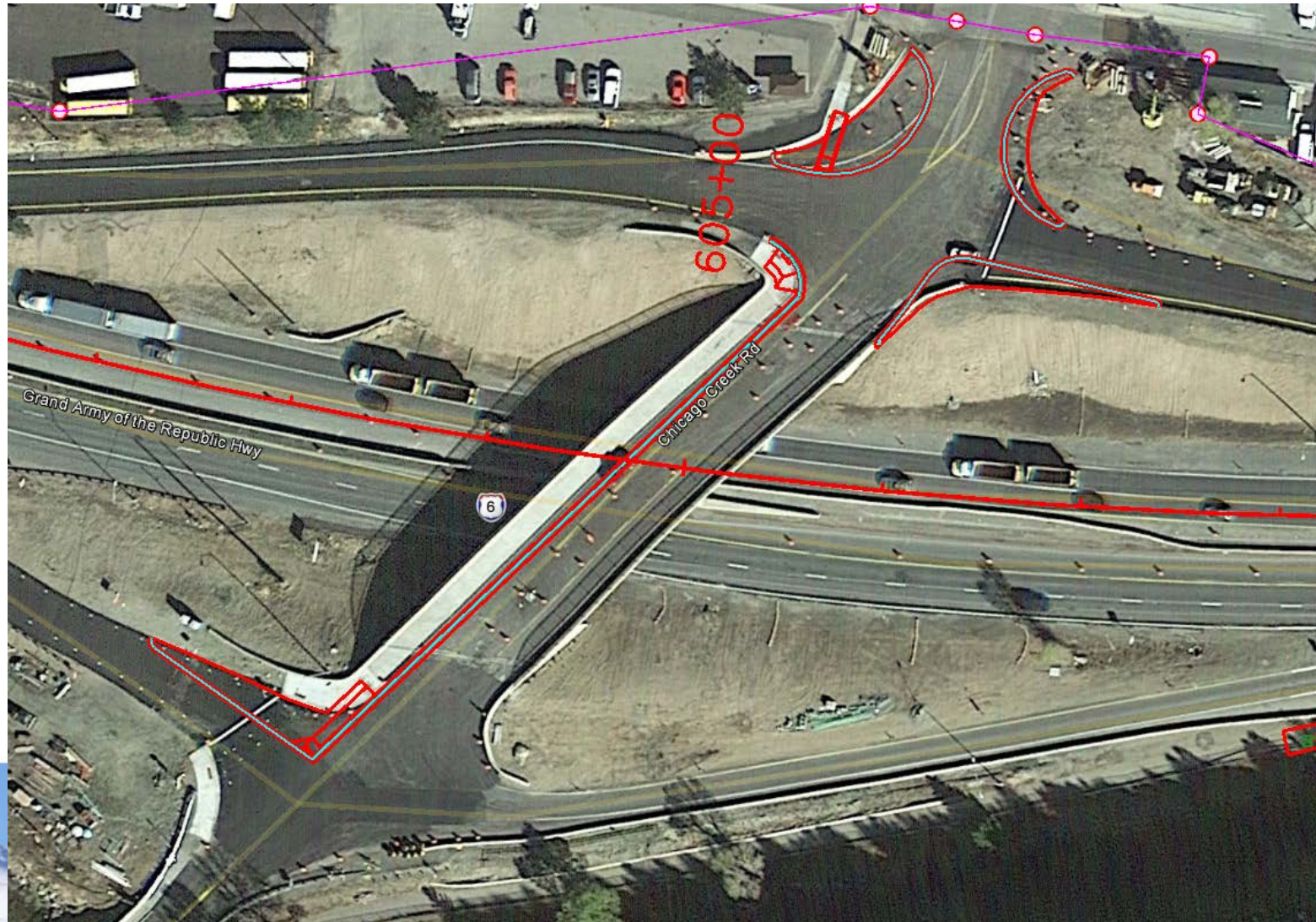




**DISCUSS PROPOSED
SOLUTIONS**

FINAL DESIGN DETAILS

- Roadway – Interchange improvements at Exit 240



FINAL DESIGN DETAILS

- Roadway – Interchange improvements at Exit 241



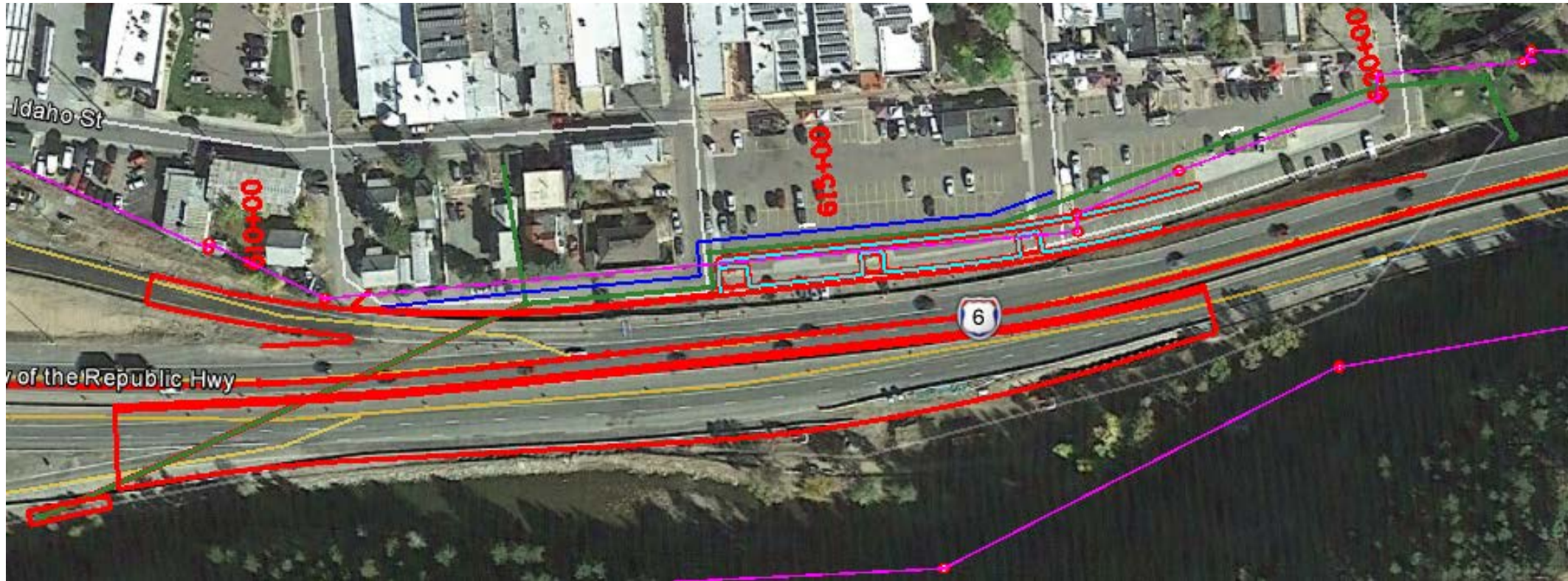
FINAL DESIGN DETAILS

- Roadway
 - Ramp lengths
 - Improved over existing conditions on accel and decel lengths (except for at truck ramp/Downieville)
 - Guardrail
 - Replaced Type 4 with paddles
 - Replaced Type 3 on the outside for consistency



FINAL DESIGN DETAILS

- Utilities – Sanitary sewer / waterline in Idaho Springs



FINAL DESIGN DETAILS

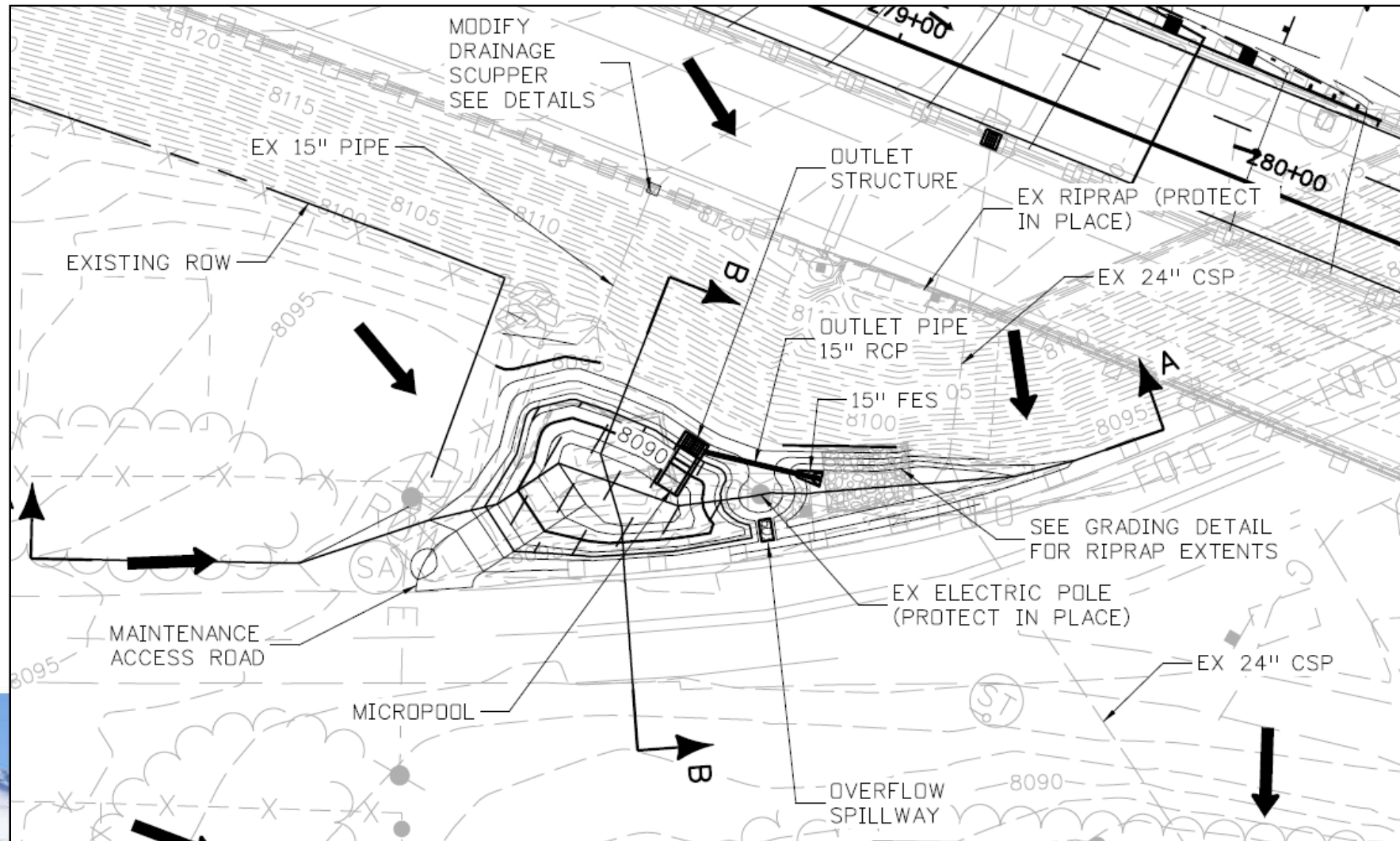
- Lighting
 - Lighting on SH 103 bridge
 - Lighting in box culvert





FINAL DESIGN DETAILS

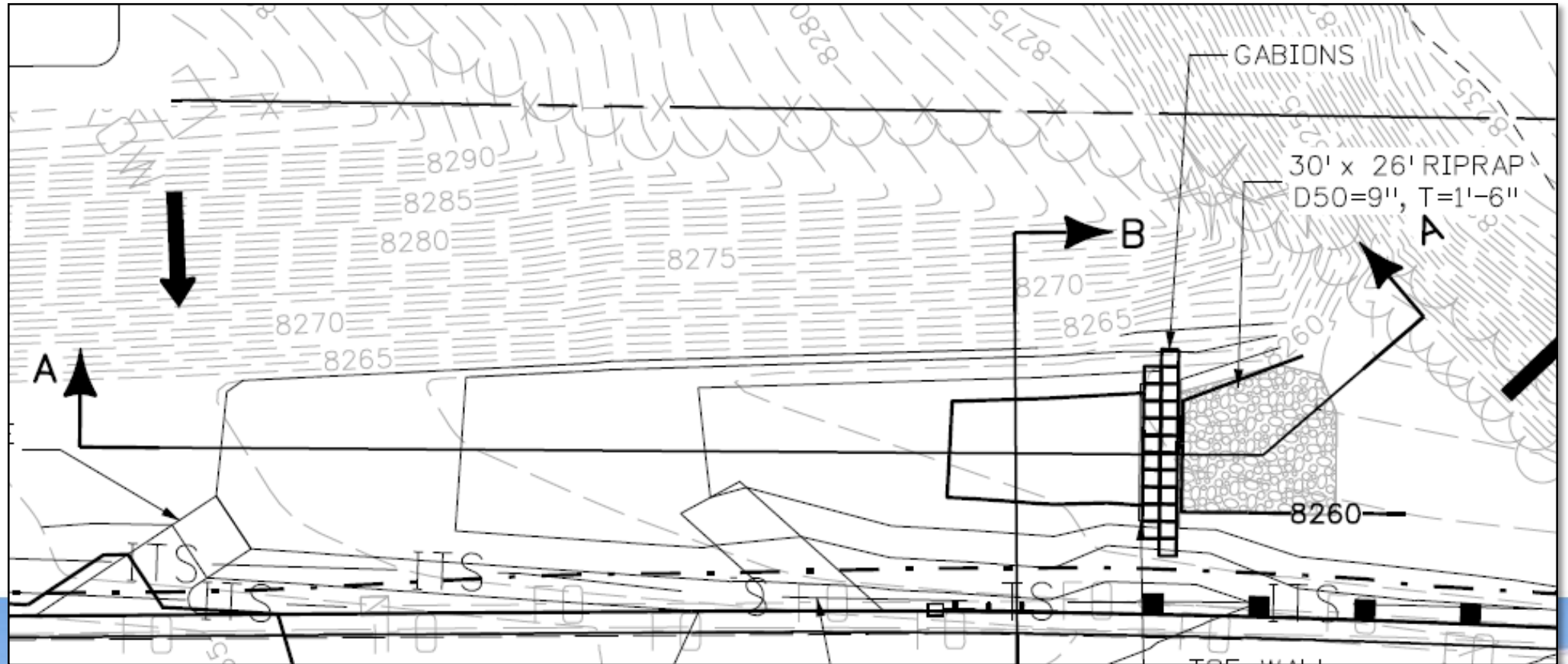
- Drainage / Water Quality – Sediment Basins Lawson (sheet 329)



DISCUSS PROPOSED SOLUTIONS

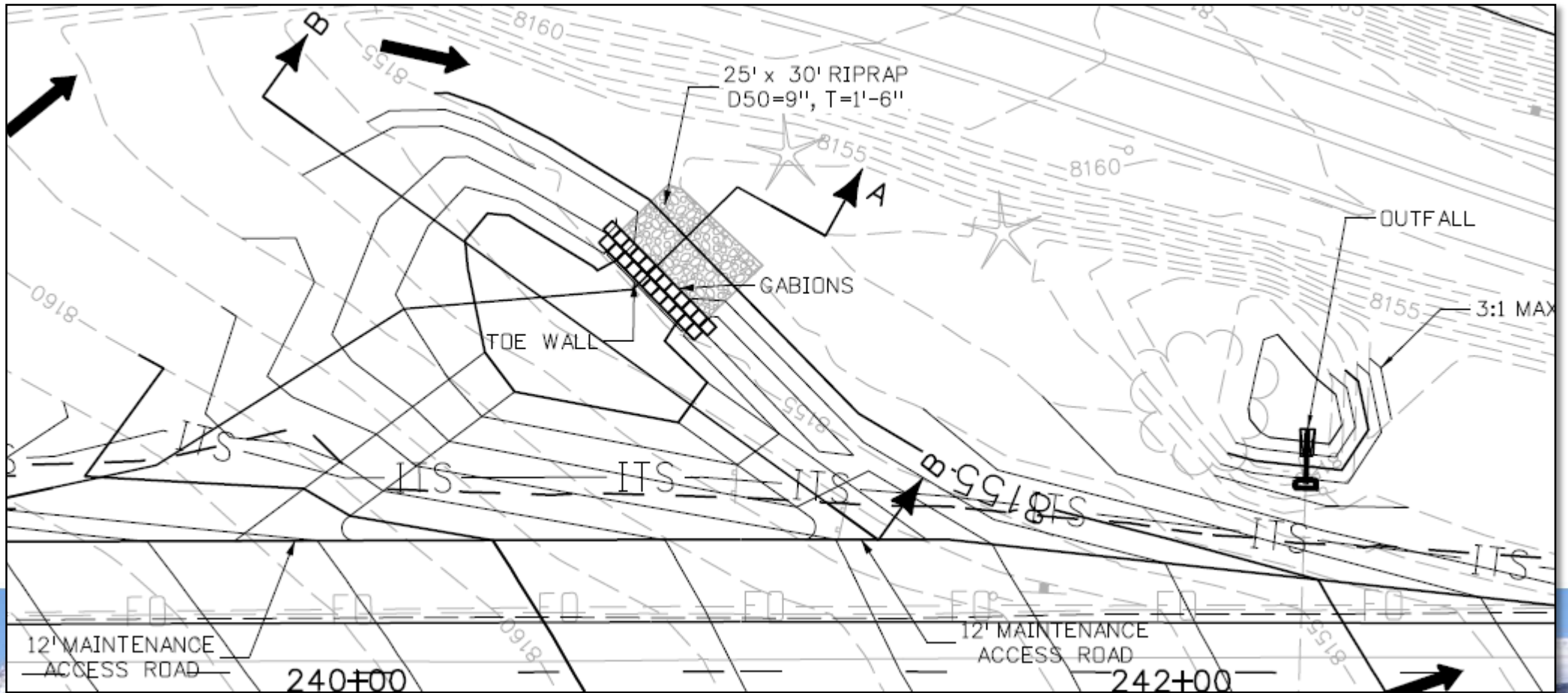
FINAL DESIGN DETAILS

- Drainage / Water Quality – Sediment Basins 1, 2, and 3 (sheet 318 thru sheet 328)



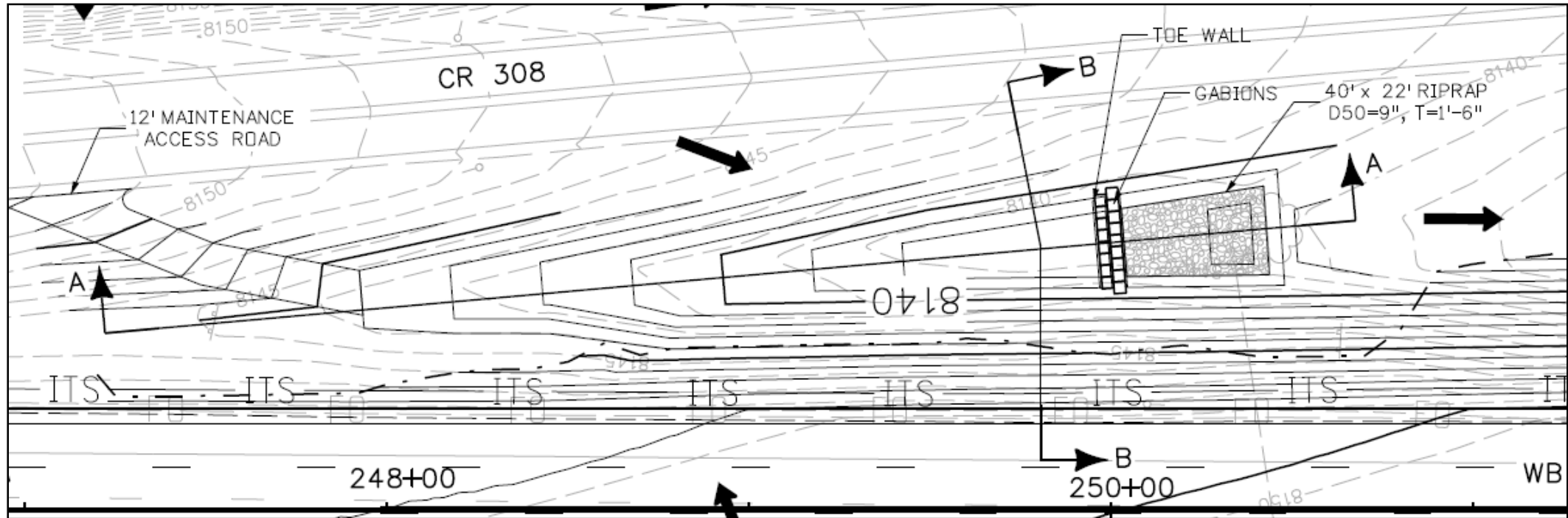
FINAL DESIGN DETAILS

- Drainage / Water Quality – Sediment Basins 1, 2, and 3 (sheet 318 thru sheet 328)



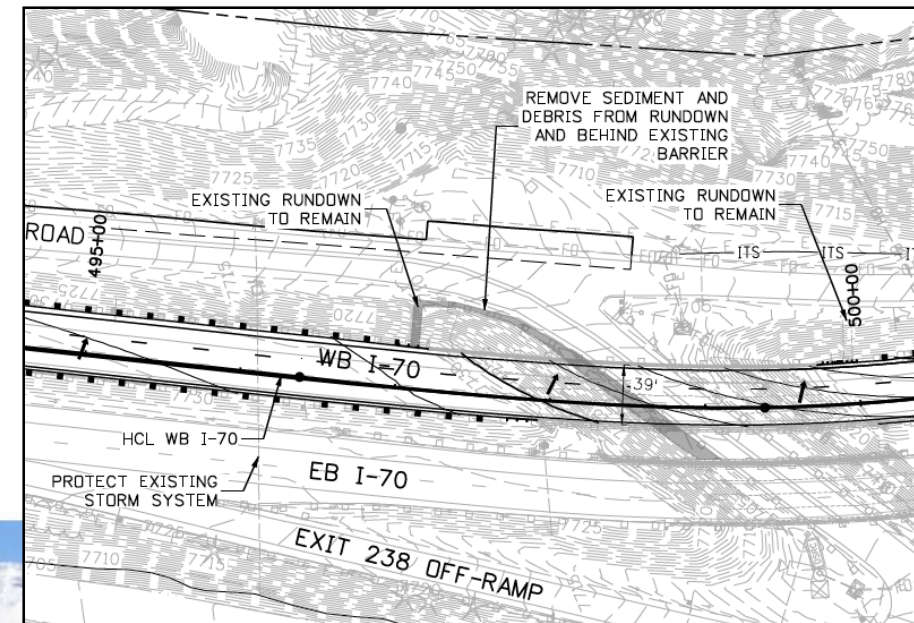
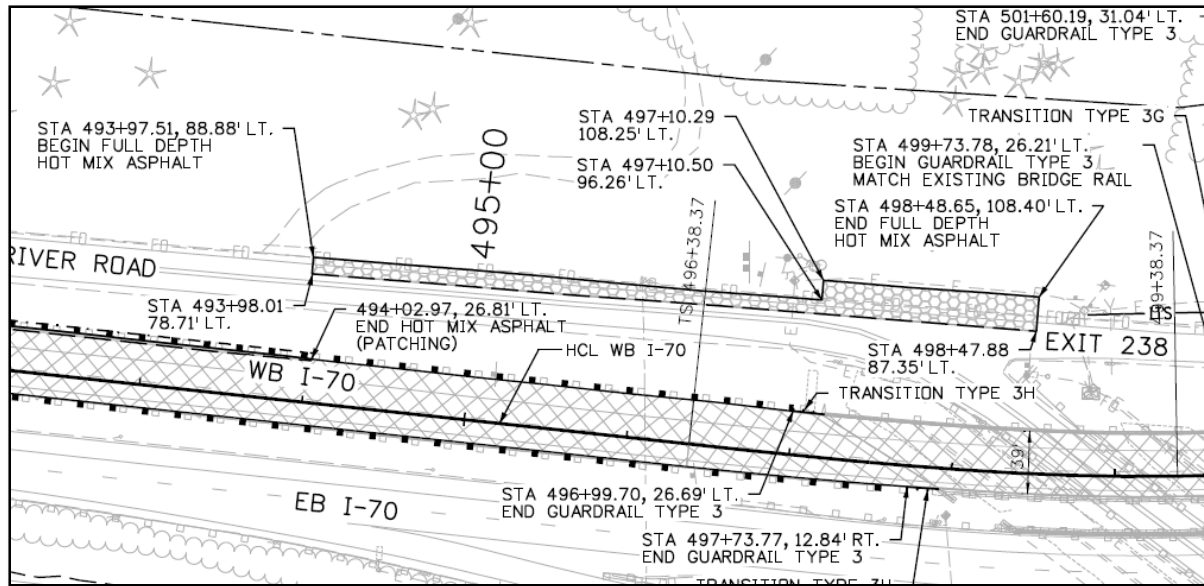
FINAL DESIGN DETAILS

- Drainage / Water Quality – Sediment Basins 1, 2, and 3 (sheet 318 thru sheet 328)



FINAL DESIGN DETAILS

➤ Drainage / Water Quality – Fall River Road

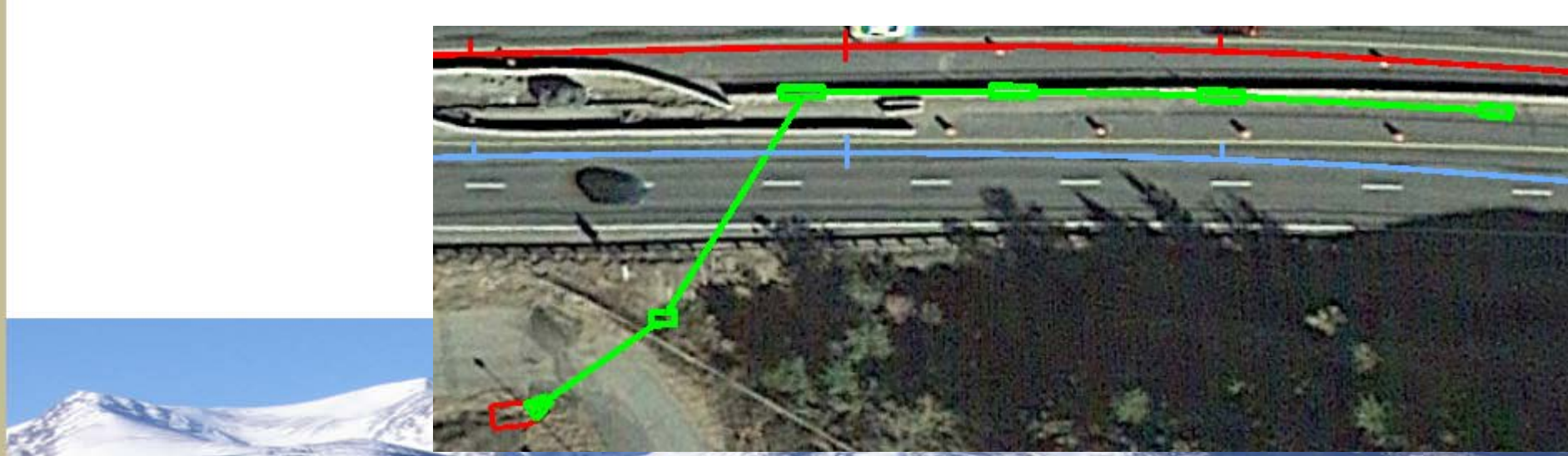




DISCUSS PROPOSED SOLUTIONS

FINAL DESIGN DETAILS

➤ Drainage / Water Quality – Drainage Systems

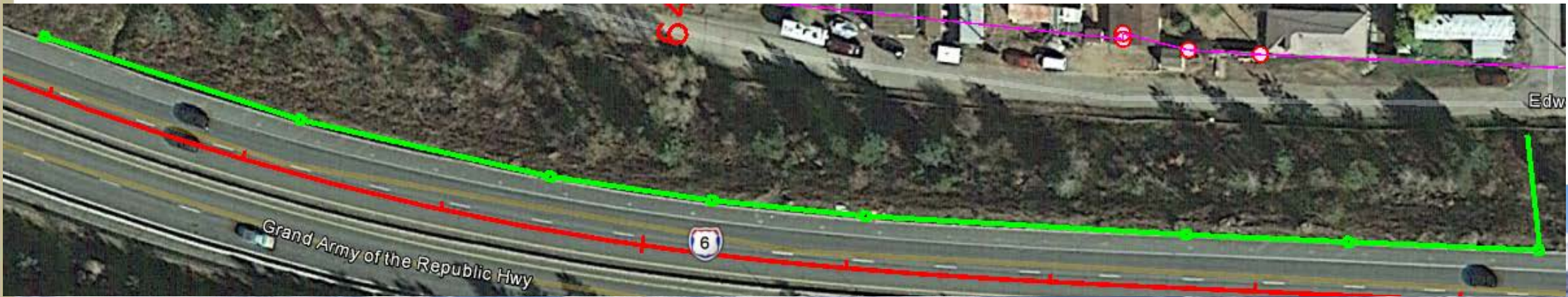




DISCUSS PROPOSED SOLUTIONS

FINAL DESIGN DETAILS

- Drainage / Water Quality – Drainage Systems



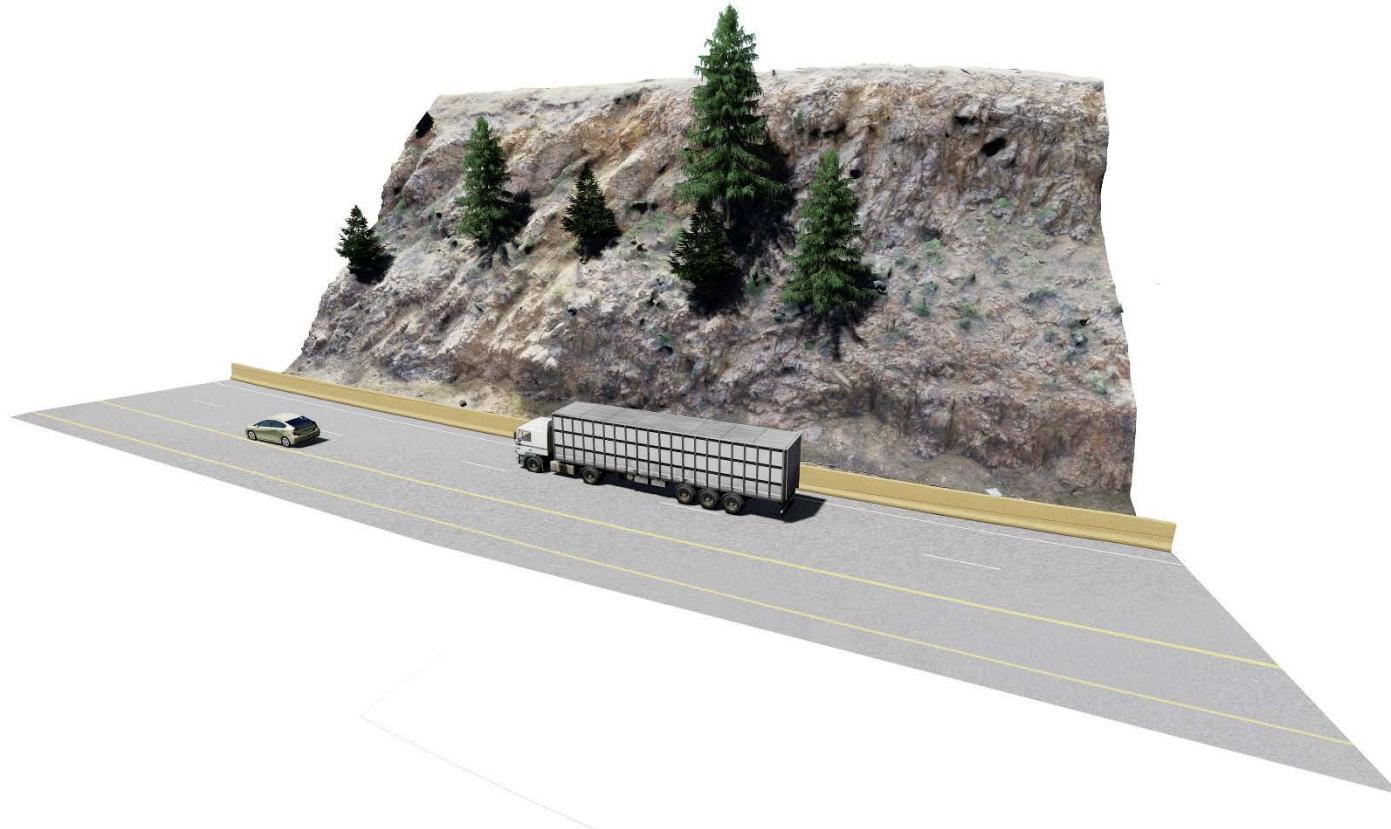
FINAL DESIGN DETAILS

- Drainage / Water Quality – Drainage Systems



FINAL DESIGN DETAILS

- Geotechnical – At Bin Wall Shift



FINAL DESIGN DETAILS

- Geotechnical – Buttress Location



BEFORE



AFTER



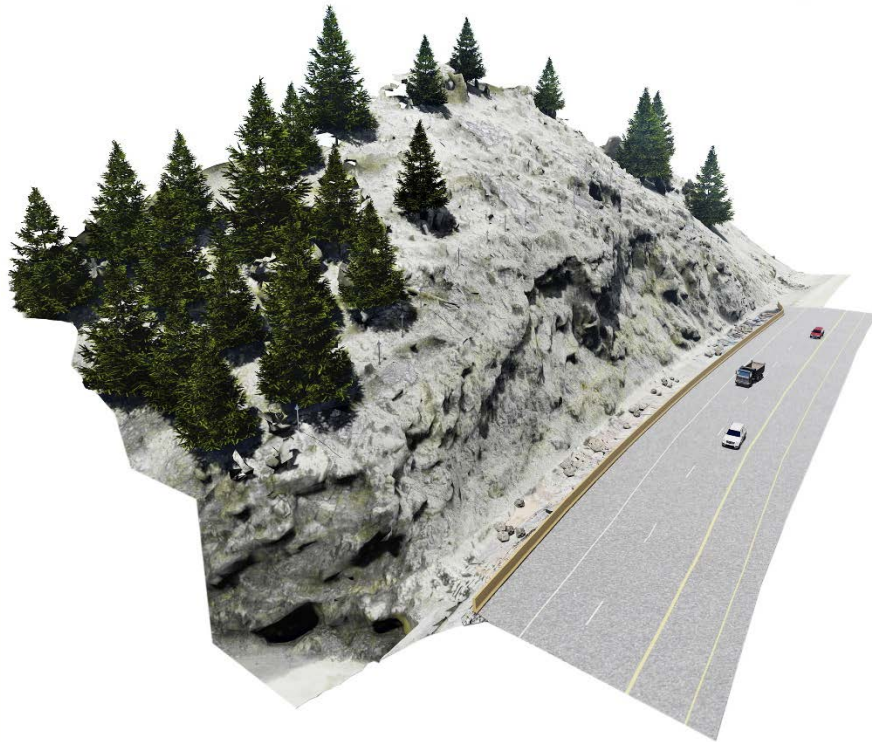
FINAL DESIGN DETAILS

➤ Geotechnical – Exit 239



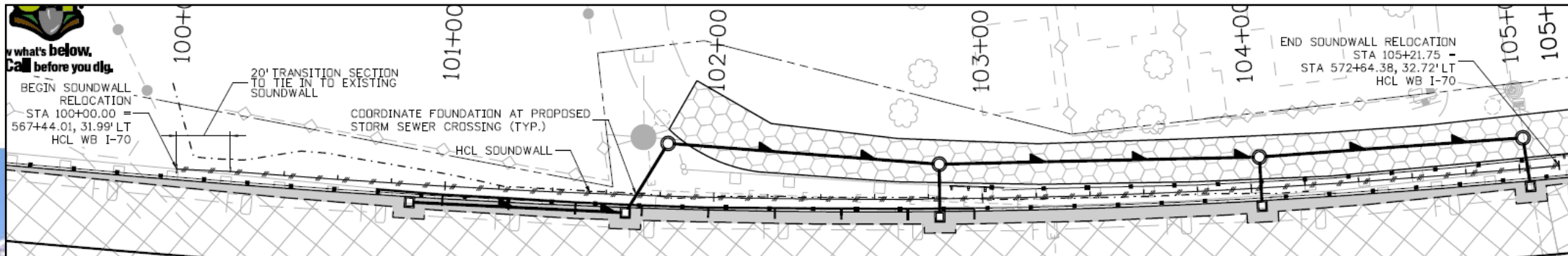
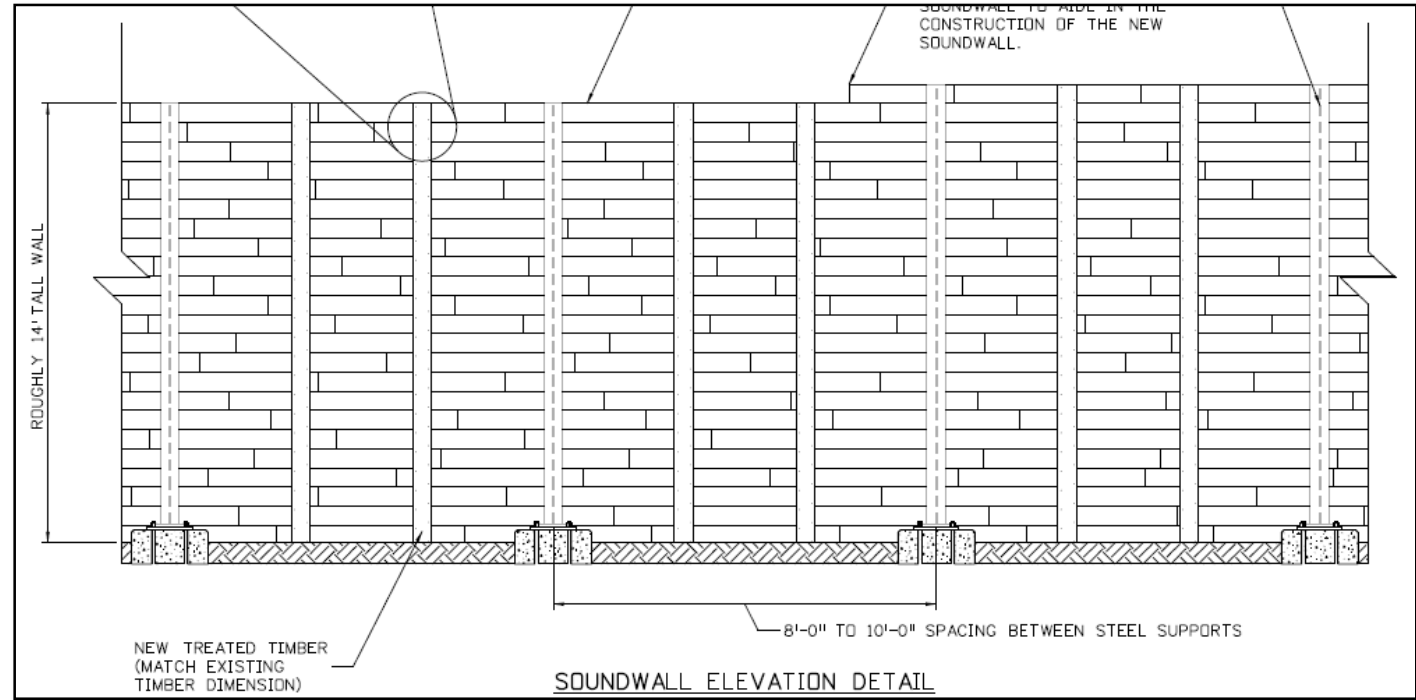
FINAL DESIGN DETAILS

- Geotechnical – Spring Gulch



FINAL DESIGN DETAILS

- Structures
 - Median Wall
 - Box Culvert
 - Noise Wall



SPECIFICATIONS SECTIONS

- Section 104 – Scope of Work / Maintaining Traffic
(pages 14 – 16)
- Section 107 – Environmental Mitigation Table
(pages 24 – 42)
- Section 626 – Public Information Services
(pages 390 – 405)
- Traffic Control Plan – General
(pages 426 – 431)




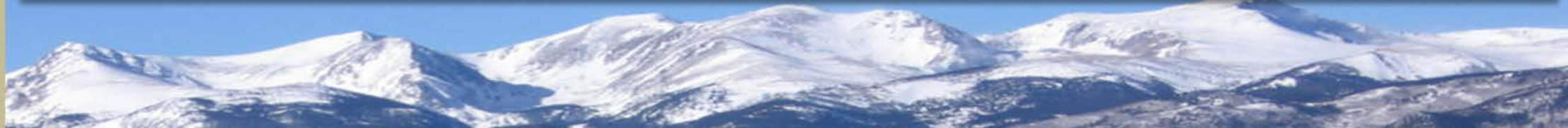


DISCUSS PROPOSED SOLUTIONS

CSS TRACKING TOOL

➤ Comments or Input on the CCS Tracking Chart

 WB I-70 Peak Period Shoulder Lane					
WB PPSL CSS Issues Tracking					
CSS Issue by Core Value	Responsible Party	Status	Date of CSS Recommendation Design/Pre-Construction	Date of CSS Review During Construction	Date of CSS Review Post-Construction
Improve safety by designing and building appropriate pullouts for emergencies and law enforcement use. 5 Westbound and 2 additional Eastbound pullouts were incorporated into the project.	CDOT	In progress	5/23/18 – TT reviews and provides input on pull out locations		
Improve safety by designing and installing a Type 9 Barrier with a glare screen through Idaho Springs for the median barrier and on the outside on the walls (replacing Type 4 barriers with paddles to reduce strobe effect of lights at night) .	CDOT	In progress	6/4/18 - Idaho Springs Community Meeting 7/11/18 – TT reviews Idaho Springs barrier recommendation		





CSS TRANSITION TO CONSTRUCTION

- Team Establishment
 - Immediate Response Team
 - Primary and Alternate
 - Construction issues requiring immediate resolution
 - Combined PLT / TT
 - Process check-in
 - Public information
 - Construction modifications

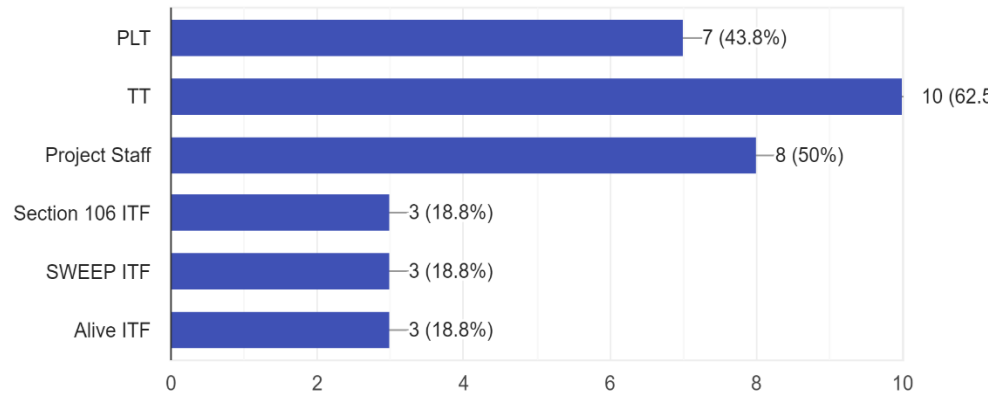


LESSONS LEARNED & BEST PRACTICES

➤ Review Results from Anonymous Survey

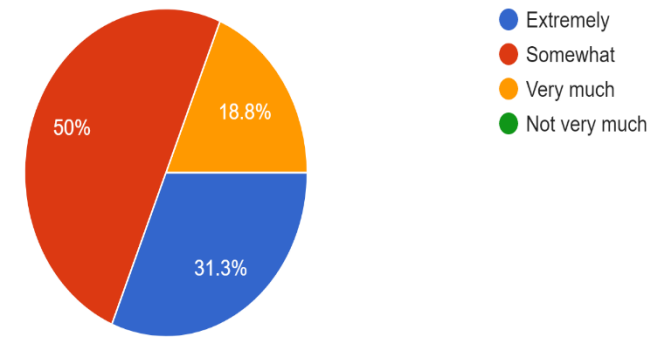
1. How did you participate in the WB PPSL project? Check all that apply.

16 responses



2. To what extent do you feel your input was valuable and your contributions were considered in decision making?

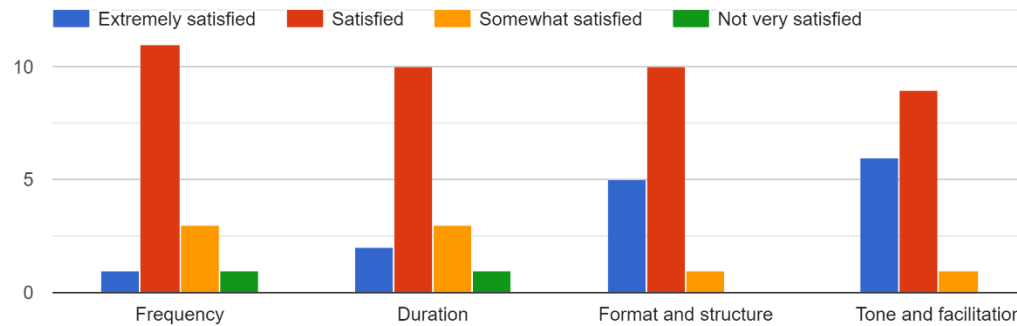
16 responses



LESSONS LEARNED & BEST PRACTICES

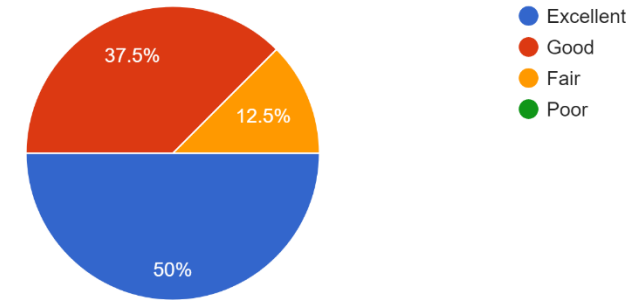
➤ Review Results from Anonymous Survey

3. Do you feel project meetings you participated in were an effective use of your time? Rate your satisfaction with the following meeting elements.



6. From your agency or organizational perspective, how would you rate the quality and timeliness of information and documentation?

16 responses



LESSONS LEARNED & BEST PRACTICES

- Review Results from Anonymous Survey
 - What was the most effective aspect of project meetings?
 - Sharing of perspectives and ideas
 - Collaboration and facilitation to build consensus and agree on solutions
 - Local stakeholder input
 - Pulling together the resource agencies, project team, consultants, and other stakeholders so they all hear the same thing at the same time
 - Visual aides (large maps. diagrams)
 - Project issue discussions
 - What one thing would you change about the WB PPSL process?
 - Clarity around PLT and TT roles
 - Ensuring a balance of stakeholder input – avoid one perspective dominating
 - Less meeting frequency and less backtracking of topics already agreed upon
 - Correcting inaccurate information and validating facts

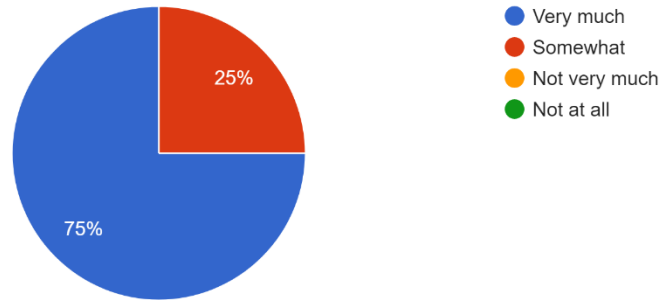


LESSONS LEARNED & BEST PRACTICES

➤ Review Results from Anonymous Survey

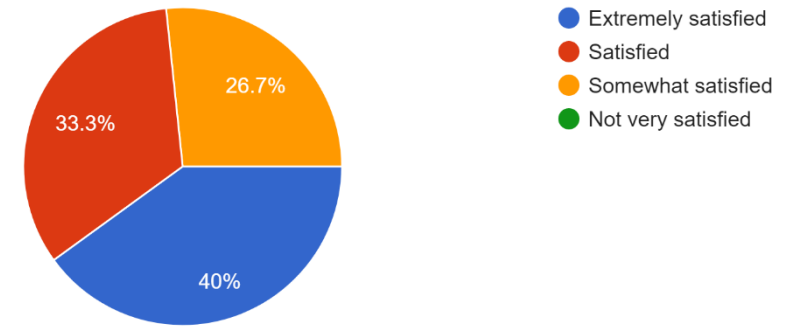
7. To what degree do you feel that CSS principles and steps were incorporated into the WB PPSL project development process?

16 responses



9. How satisfied are you with the design of the WB PPSL?

15 responses



LESSONS LEARNED & BEST PRACTICES

- Review Results from Anonymous Survey
 - What about the CSS process worked well?
 - Early distribution of materials
 - Diversity of stakeholders at the table
 - Neutral facilitation and communication
 - Bringing stakeholders together to ask questions and give input
 - What would you change?
 - Consolidate meetings
 - More one-on-one meetings with stakeholders
 - Meeting location – closer to project location
 - Balancing stakeholder voices

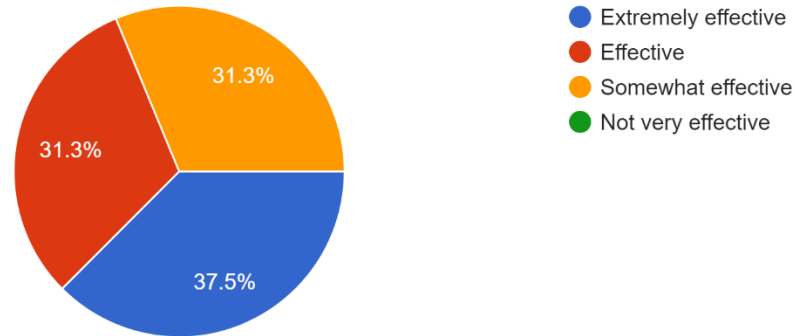


LESSONS LEARNED & BEST PRACTICES

➤ Review Results from Anonymous Survey

10. How effective do you feel the Project Leadership Team and Technical Team was in incorporating technical a...B PPSL project development process?

16 responses



- Please explain further.
 - More review time is needed
 - Genuine interest from technical side to understand viewpoints of community
 - More representation of community and reaching out to local stakeholders on part of representatives
 - Consideration of broader impact

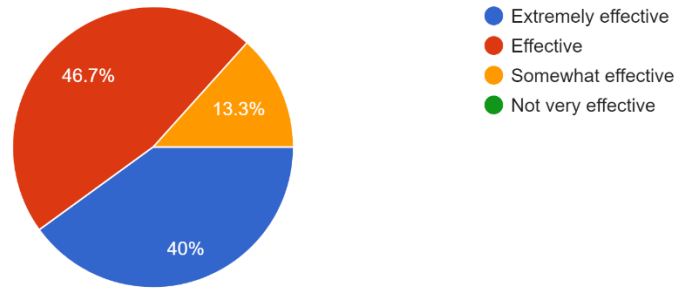


LESSONS LEARNED & BEST PRACTICES

➤ Review Results from Anonymous Survey

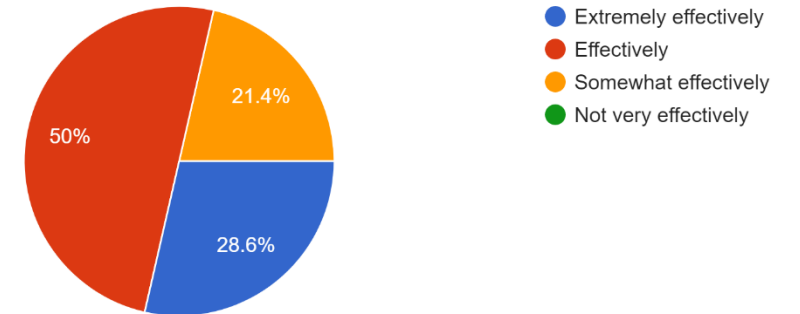
11. How effective do you feel the Issue Task Forces were in crafting solutions or recommendations regarding specific issues?

15 responses



12. How effectively do you feel the general public was engaged in this project?

14 responses



LESSONS LEARNED & BEST PRACTICES

- Review Results from Anonymous Survey
 - What suggestions and/or recommendations do you have for engaging the public on future projects?
 - WB PPSL was effective, timely, and appropriate
 - Keep materials available for public to see after meetings (in county buildings)
 - Incorporate discussions and Q&A into existing events public already attends
 - Neighborhood meetings
 - Broad participation beyond CCC
 - What was the greatest success of the WB PPSL CSS process?
 - Coordinating with stakeholders
 - INFRA grant
 - Approved CATEX with compromise including FHWA
 - Final design
 - Long-term relationships and partnerships





NEXT STEPS

PROJECTS

- WB PPSL
- CR 314
- Fall River Road Bridge
- Greenway



NEXT STEPS

- **Greenway ITF – November 14, 2018**
- **FOR Meeting – November 15, 2018**
- **Construction PLT Kickoff Meeting – Spring 2019**

